



# SIGMA Series G-Build Engine

**SW 40-18**

Power range: 45 kW; 60.3 bhp  
Fixed speed: 1800 r/min

## Turbocharged heavy-duty G-Build diesel engine

### Special Attributes

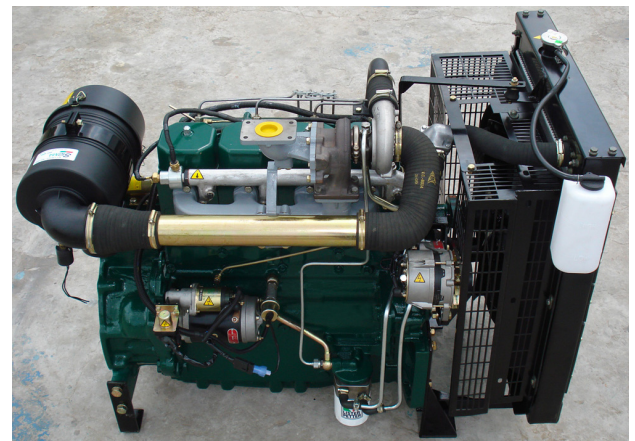
- suitable for generating sets
- 250-hour service intervals
- continuous operation in ambient temperatures up to 50°C (122°F)
- unaided cold-start down to -2°C (28.4°F)

### Basic Engine Characteristics

- four cylinders
- diesel fuelled
- direct injection
- liquid cooled
- turbocharged

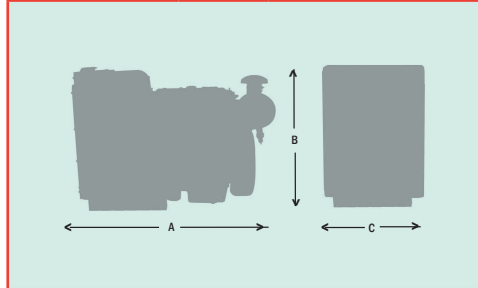
### Design Features and Equipment

- standard oil and fuel filters
- 12 V electric start
- anticlockwise rotation, looking on flywheel
- SAE 10" flywheel
- SAE 3 flywheel housing
- radiator with fan guard
- cast-iron crankcase
- self-vent fuel system
- inline fuel injection pump
- flywheel with ring gear
- air cleaner
- low oil-pressure switch
- spin-on lubricating-oil filter
- oil cooler
- primary/secondary fuel filter
- inlet and exhaust manifolds
- operators' handbook
- instrumentation package



Technical Data		
Number of cylinders		4
Firing order (number 1 cylinder is at gear end)		1 3 4 2
Fuel injection		Direct injection
Aspiration		Turbocharged
Direction of rotation, looking on flywheel		Anticlockwise
Nominal cylinder bore	mm	105
	in	4.13
Stroke	mm	110
	in	4.33
Total cylinder capacity	litre	3.81
	in <sup>3</sup>	232.3
Compression ratio		19:1
Rated maximum full-load speed	r/min	1800
Mean piston speed	m/sec	6.6
	f/sec	21.6
Oil consumption		Maximum 0.3% of fuel consumption

Dimensions and Weight		
Length (A)	mm	1160
	in	45.67
Height (B)	mm	982
	in	38.6
Width (C)	mm	730
	in	28.74
Dry Weight	kg	460
	lb	1013



Fuel Consumption	
r/min	1800
litres/hour @ 100% power (continuous power)	12.6

A comprehensive range of options allows you to select a specification that matches your requirements. Please ask your Lister Petter distributor. (See panel below left.)

**Distributor's Address**

Lister Petter have made efforts to ensure that the information in this data sheet is accurate but reserve the right to amend specifications and information without notice and without obligation or liability.

Power Outputs*		
	r/min	1800
Continuous Power	kW	45
	bhp	60.3
Overload Power	kW	49.5
	bhp	66.4

**Rating Definitions, to ISO 3046**

**ISO Standard Conditions**

Barometric pressure ..... 100 kPa  
 Relative humidity..... 30%  
 Ambient temperature at air inlet manifold .....25°C

**Fixed speed power: continuous power (ICN)**

The power in kW which the engine is capable of delivering continuously at the stated crankshaft speed, under ISO standard conditions, measured at the flywheel without power-absorbing accessories, provided that the engine is overhauled and maintained in good operating condition and that fuel to BS EN 590 Class A1 or A2, and lubricating oils to the correct performance specification and viscosity classification as recommended by Lister Petter Limited, are used.

**Fixed speed power: overload power (ICXN)**

The maximum power in kW which the engine is capable of delivering intermittently at the stated crankshaft speed for a period not exceeding one hour in any period of twelve hours' continuous running, immediately after working at the continuous power, under ISO standard conditions and with the provisions specified for continuous power above.

**De-rating**

For non-standard site conditions, reference should be made to relevant BS, ISO and DIN standards.

**Notes:**

1. Power ratings are measured at the flywheel end.
2. Power ratings and fuel consumption figures apply to a fully run-in, non-derated engine without a radiator and fan fitted, and without power-absorbing accessories or transmission equipment.



**UK**

Lister Petter Limited, Dursley, Gloucestershire  
 GL11 4HS England

Tel: +44 (0)1453 544141; fax: +44 (0)1453 546732

E-mail: sales@lister-petter.co.uk <http://www.lister-petter.co.uk>